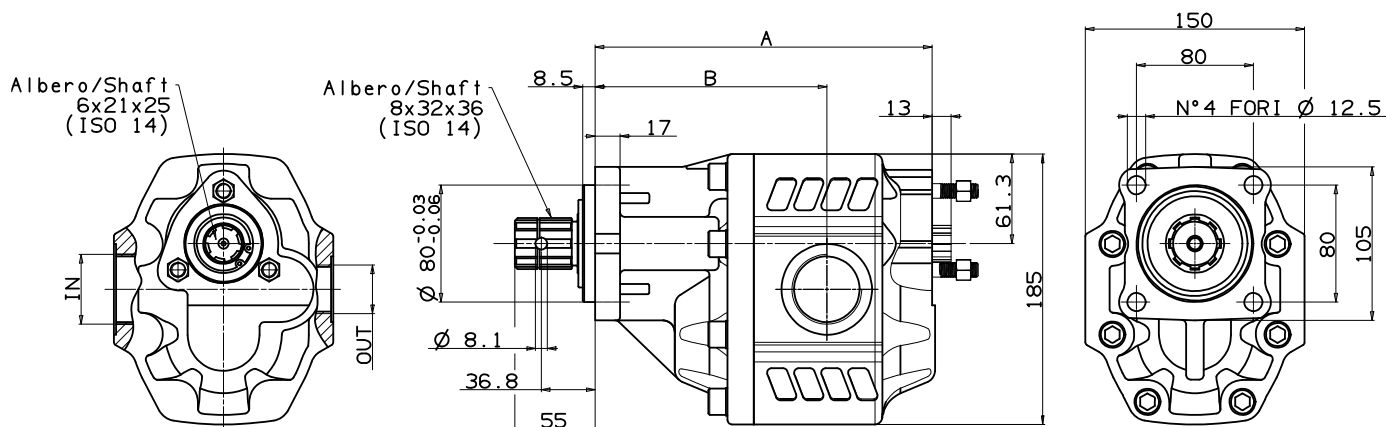


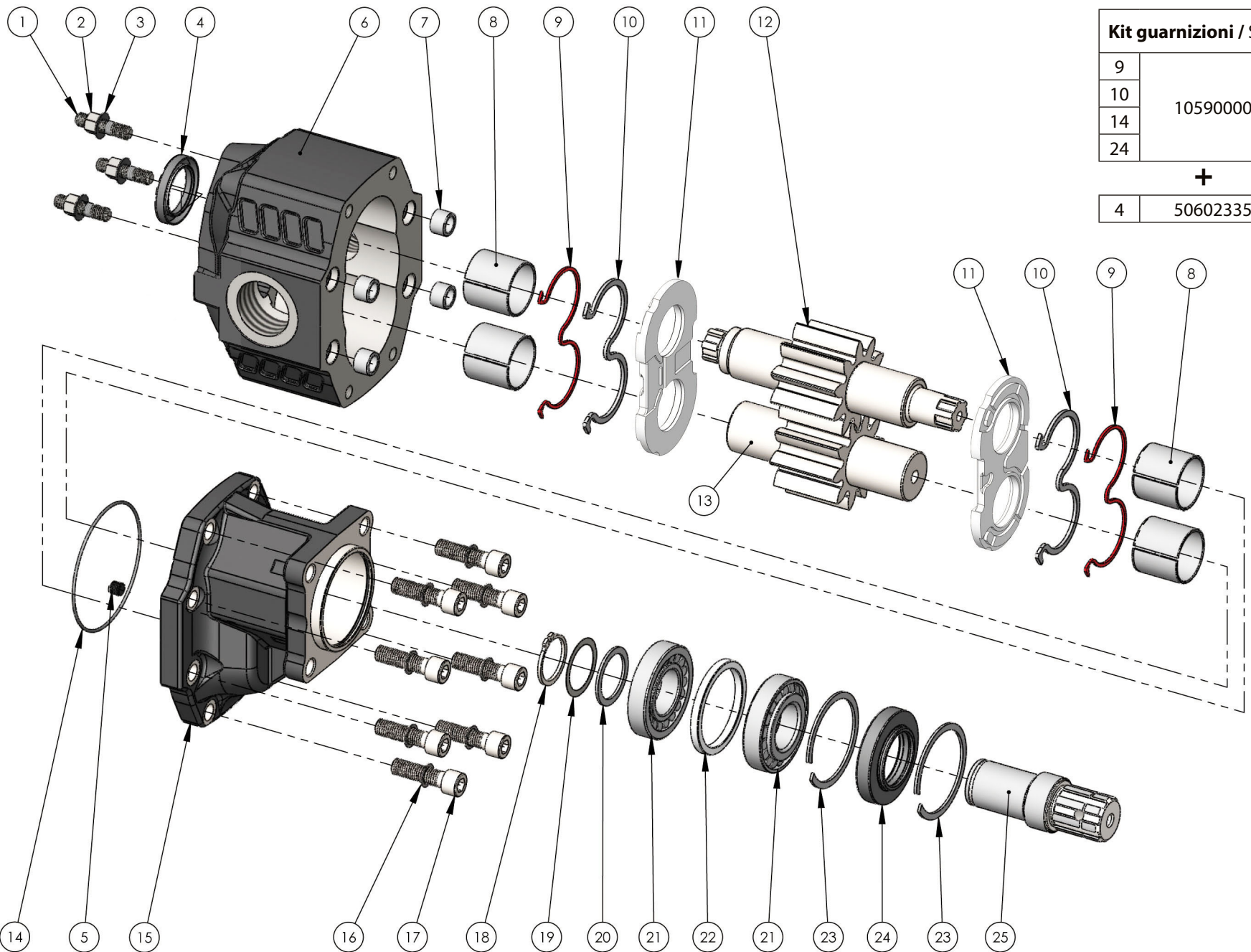
Fluido idraulico <i>Fluid</i>	Minerale o sintetico compatibile con guarnizioni: <i>Mineral or synthetic compatible with the following seals:</i> NBR, FKM, FPM, Nylon				
Viscosità cinematica consigliata <i>Kinematic viscosity suggested</i>	T media ambiente (°C) <i>Average ambient temp. (°C)</i>	< -10	-10÷10	10÷35	> 35
	VG (cSt = mm ² /s)	22	32	46	68
Viscosità cinematica ottimale di esercizio <i>Optimale kinematic viscosity</i>			VG= 10 cSt ÷ 100 cSt		
Viscosità cinematica max consentita all'avviamento <i>Max kinematic viscosity suggested at the start-up</i>			VG= 750 cSt		
Indice di viscosità consigliato <i>Viscosity index suggested</i>	VI > 100	Temperatura di esercizio <i>Working temperature</i> -15°C +100°C			
Grado di filtrazione <i>Oil filtering</i>			> 200 bar: 10 µm < 200 bar: 25 µm		
Pressione di aspirazione <i>Inlet pressure</i>			-0,3 ÷ 2 bar		
Senso di rotazione <i>Pump rotation</i>			Unidirezionale <i>Unidirectional</i>		

Ingombro / Dimensions

Dati tecnici / Technical data

Tipo pompa <i>Pump type</i>	Rotazione <i>Rotation</i>		IN	OUT	A	B	Peso <i>Weight</i>
	Destra / Right	Sinistra / Left					
NPGH-63	10502210634	10502210643	G 1	G 3/4	199.5	136.5	20.1
NPGH-73	10502210732	10502210741			203.5	140.5	20.7
NPGH-84	10502210849	10502210858	G 1 1/4	G 1	207.5	141	20.9
NPGH-100	10502211008	10502211017			213.5	144.5	21.5
NPGH-116	10502211160	10502211179			219.5	150.5	22
NPGH-133	10502211339	10502211348	G 1 1/2		225.5	153.5	22.8
NPGH-150	10502211508	10502211517			230.5	158.8	24.1

PREDISPOSTA PER 2^A POMPA CON FLANGIA UNI
READY FOR 2ND PUMP WITH UNI FLANGE

Kit guarnizioni / Seal Kit	
9	10590000213
10	
14	
24	
+	
4	5060233527



N°	63	73	84	100	116	133	150	Codice/Code	Descrizione / Description		Q.
1	50300400198	Dado M10 CH14 H10	Nut M10 CH14 H10	3
2	50500400014	Rondella elastica	Washer	3
3	50101800105	Prigioniero M10x30	Stud bolt M10x30	3
4	50602335527	Guarnizione paraolio	Oil seal	1
5	50401000063	Grano conico 1/8"	Plug 1/8"	1
6	.							51702000635 Dx/Right	Corpo pompa	Gear housing	1
	.							51702010633 Sx/Left			
		.						51702000724 Dx/Right			
		.						51702010722 Sx/Left			
			.					51702000840 Dx/Right			
			.					51702010848 Sx/Left			
				.				51702001009 Dx/Right			
				.				51702011007 Sx/Left			
					.			51702001161 Dx/Right			
					.			51702011169 Sx/Left			
					.		51702001321 Dx/Right				
					.		51702011329 Sx/Left				
						.	51702001509 Dx/Right				
						.	51702011507 Sx/Left				
7	50100300291	Spine forate di centraggio 18x12.5	Pins 18x12.5	4
8	53300400088	Boccole autolub. 38x42x38	Bushing 38x42x38	4
9	50600001195	Guarnizione antiestrusione	Back-up ring	2
10	50600001186	Guarnizione per rasamento	Thrust plate seal	2
11	51001000328	Rasamento ad occhiale	Thrust plate	2
12	.							52302200630	Albero dentato conduttore	Drive shaft	1
		.						52302200729			
			.					52302200845			
				.				52302201004			
					.			52302201166			
						.		52302201326			
13	.							52302201504	Albero dentato condotto	Driven shaft	1
		.						52302000632			
			.					52302000721			
				.				52302000847			
				.				52302001006			
					.			52302001168			
					.		52302001328				
						.	52302001506				
14	50600001337	Guarnizione OR	O-Ring	1
15	51800300161	Coperchio anteriore	Mounting cover	1
16	50102000129	Rondella elastica	Washer	8
17	50200500573	Vite TCE M12x45	Screw M12x45	8
18	50100001355	Anello seeger	Seeger ring	1
19	52900700226	Rondella speciale 45x30x0,2	Special washer 45x30x0,2	1
20	52900700208	Rondella speciale 45x35x2	Special washer 45x35x2	1
21	51000200211	Cuscinetto rulli conici 35x72x18,25	Tapered roller bearing 35x72x18,25	2
22	53000100783	Distanziale 60x72x6,75	Spacer 60x72x6,75	1
23	50100002729	Anello elastico	Circlip	2
24	50600842723	Guarnizione paraolio	Oil seal	1
25	11400500147	Manicotto	Coupling	1

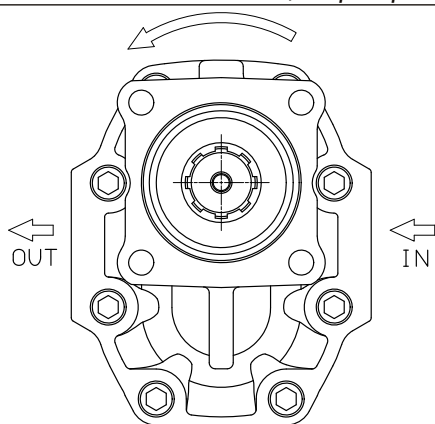
CARATTERISTICHE TECNICHE DI FUNZIONAMENTO - TECHNICAL FEATURES

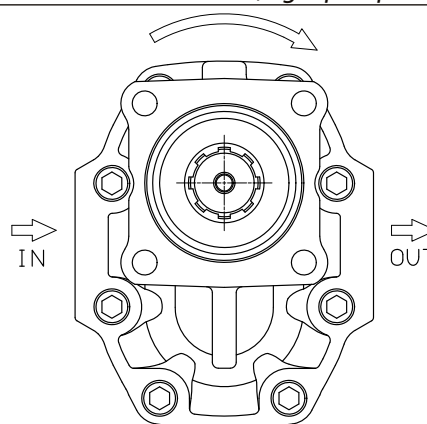
Tipo pompa Pump type	Cilindrata Displacement <i>cm³/rev</i>	Pressione Pressure			Velocità max. continua Max. continuous speed <i>rpm</i>	Velocità max. intermittente Max. intermittent speed <i>rpm</i>	Velocità min. Min. speed <i>rpm</i>
		P1	P2	P3			
NPGH-63	63.70	290	315	325	1800	2700	300
NPGH-73	74.87	280	300	315			
NPGH-84	85.96	260	280	290			
NPGH-100	102.60	250	270	280			
NPGH-116	119.24	240	260	270	1500	2500	300
NPGH-133	135.88	220	250	260			
NPGH-150	149.75	180	210	220			

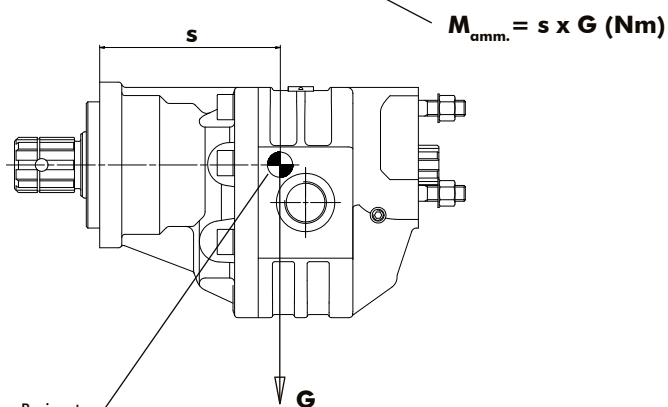
 P1=Pressione max.continua
 P2=Pressione max. intermittente
 P3=Pressione max. di punta

 Max. continuous pressure
 Max. Intermittent pressure
 Max. peak pressure

 (100%)
 (20 sec.max.)
 (6 sec.max)

IDENTIFICAZIONE ASPIRAZIONE/MANDATA / SUCTION/DELIVERY IDENTIFICATION:
Rotazione antioraria, pompa sinistra
 Anti-clockwise rotation, left pump

 Vista FRONTALE
 FRONT

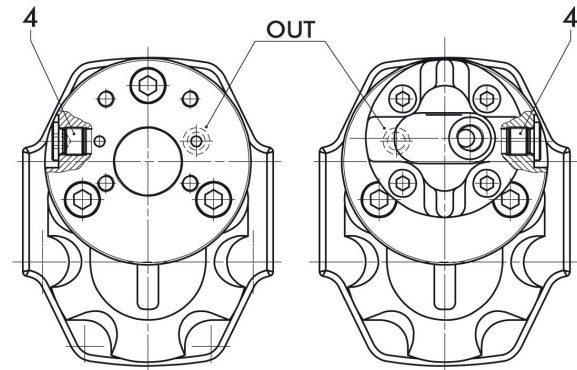
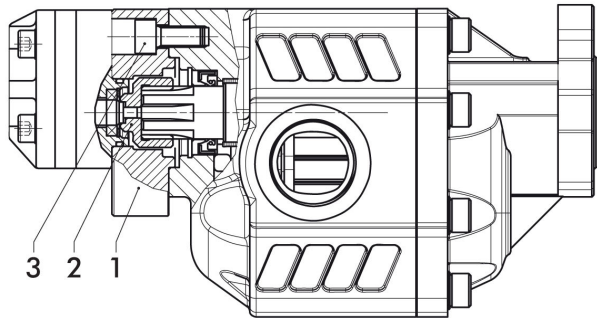
Rotazione oraria, pompa destra
 Clockwise rotation, right pump

 Vista FRONTALE
 FRONT

MOMENTO PESO / MASS MOMENT

 Baricentro
 Center of mass

 G=Peso in N (Peso in Kg x 9.81)
 G=Weight in N (Weight in Kg x 9.81)

Tipo pompa - Pump type	S
NPGH-63	111
NPGH-73	114
NPGH-84	117
NPGH-100	121
NPGH-116	124
NPGH-133	128
NPGH-150	132

LA POMPA E' MUNITA DI PARAOLIO BIDIREZIONALE E DI CUSCINETTI A RULLI CONICI SULL'ALBERO DI USCITA
 THE PUMP IS COMPLETE WITH DOUBLE OIL-SEAL AND TAPERED ROLLER BEARING ON THE OUTPUT SHAFT

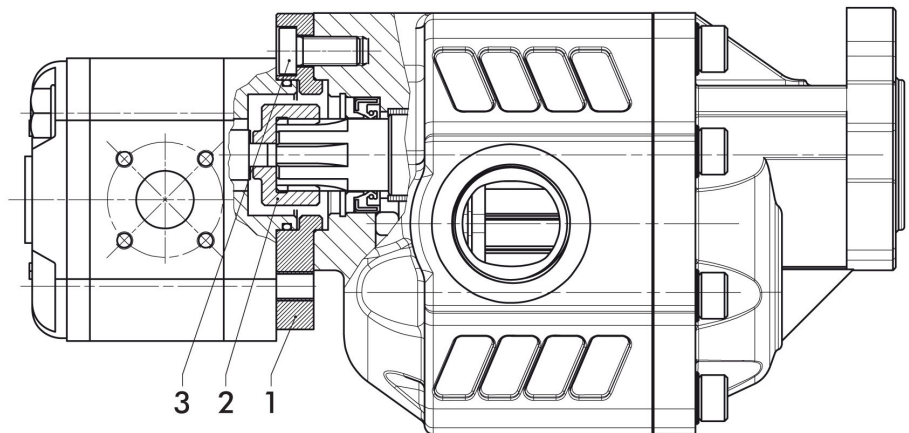
Pompe 1P
1P pumps

 Montaggio pompa 1P Dx
 Mounting pump 1P R

 Montaggio pompa 1P Sx
 Mounting pump 1P L

Kit montaggio codice: 10502000101
Mounting kit:
Coppia max.
Max. torque 21,5 Nm

Pos.	Codice Code	Descrizione Description	Q.
1	52800700817	Flangia per montaggio pompe 1P Destra/Sinistra Mounting flange for pumps 1P Left/Right	1
2	11400400853	Manicotto Coupling	1
3	50200400538	Vite TCE M10x22 UNI 5931 CL 12.9 Hex head screw M10x22 UNI 5931 CL 12.9	3
4	11500600117	Tappo TCE 1/4" DIN 908 Hex head plug 1/4" DIN 908	1

Pompe 2P
2P pumps

L'applicazione è da utilizzare solo con le pompe:
The assembly should be used only with the following pumps:
14920009433 4cc destra/right
14920009442 4cc sinistra/left
14920009451 6cc destra/right
14920009460 6cc sinistra/left

Kit montaggio codice: 10502000209
Mounting kit:
Coppia max.
Max. torque 70 Nm

Pos.	Codice Code	Descrizione Description	Q.tà Q.ty
1	52800700808	Flangia per montaggio pompe 2P Mounting flange for pumps 2P	1
2	11400400844	Manicotto Coupling	1
3	50200000149	Vite TCE M10x22 DIN 7984 CL 10.9 Hex head screw M10x22 DIN 7984 CL 10.9	3